

WGS 84 POSITIONS can be plotted directly on this chart

RIVER HUMBER SKITTER CHANNEL

DEPTHS IN METRES
SCALE 1 : 10000

SURVEYED BY
Harbour Master, Humber
ASSOCIATED BRITISH PORTS
14th and 15th February 2018

Depths are in metres and decimetres reduced to the chart datum given below
Underlined figures are drying heights in metres and decimetres above chart datum

TIDAL LEVELS AND CHART DATUM

PLACE	Heights in metres above Chart Datum				Chart Datum and remarks
	M.H.W.S	M.H.W.N	M.L.W.N	M.L.W.S	
KING GEORGE DOCK	7.6	6.0	2.5	0.7	3.9m below O.D. Newlyn } Being approx. L.A.T.
ALBERT DOCK	7.6	5.9	2.5	0.7	3.9m - - - - -
HUMBER BRIDGE	7.2	5.4	1.9	0.3	3.3m - - - - -

Projection: Transverse Mercator. National Grid references are given along borders of chart

1. Light stars without legends represent two fixed lights displayed vertically and are seen as red to port and green to starboard when proceeding upriver.

2. Gas pipelines contain flammable natural gas under high pressure. Any ship damaging the lines would face an immediate fire hazard. Mariners must not anchor in the vicinity of the lines.

Whilst every care was taken in the preparation of this Chart, which is intended to provide Mariners with the data which Associated British Ports possessed at the time of its preparation, ABP gives notice that, thereafter, on account of the quickly changing character of the river bed, no warranty is afforded that such data can be relied upon and, further, no responsibility can be accepted by ABP for any inaccuracy in the Chart or omission therefrom.

SATELLITE-DERIVED POSITIONS
Positions obtained from satellite navigation systems, such as the Global Positioning System (GPS), are normally referred to the World Geodetic System 1984 Datum. Such positions can be plotted directly on this chart.

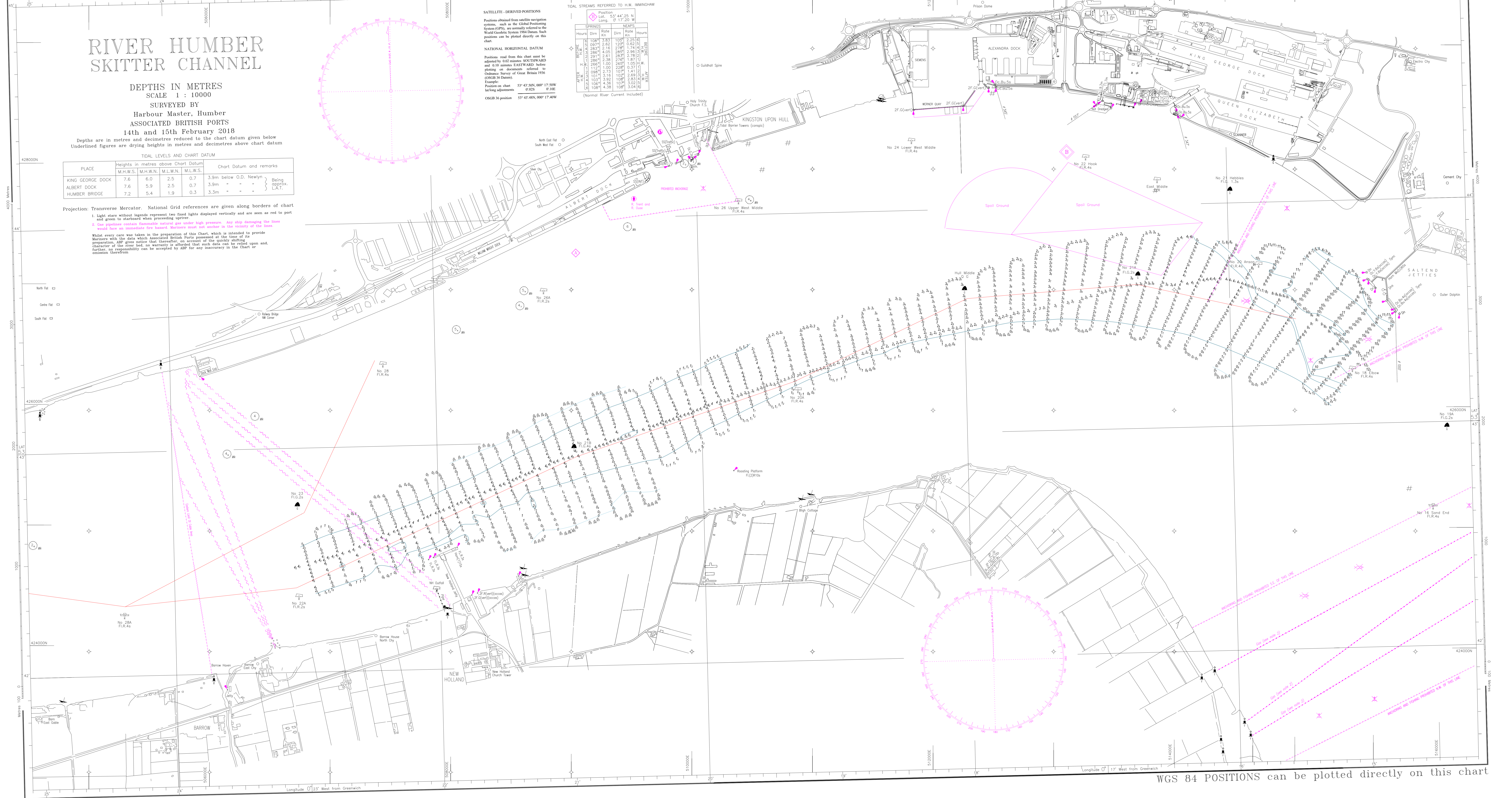
NATIONAL HORIZONTAL DATUM
Positions read from this chart may be adjusted by 0.02 metres SOUTHWARD and 0.10 metres EASTWARD before plotting on documents referred to Ordnance Survey of Great Britain 1956 (OSGB 36 Datum).

Example:
Position on chart 53° 47' 50N, 009° 17' 50W
OSGB 36 position 53° 47' 48N, 009° 17' 40W

TIDAL STREAMS REFERRED TO H.W. IMMINGHAM

SPRINGS	Rise		Falls	
	Hours	Dirn	Hours	Dirn
0000	0.00	120°	0.00	120°
0100	0.20	120°	0.20	120°
0200	0.40	120°	0.40	120°
0300	0.60	120°	0.60	120°
0400	0.80	120°	0.80	120°
0500	1.00	120°	1.00	120°
0600	1.20	120°	1.20	120°
0700	1.40	120°	1.40	120°
0800	1.60	120°	1.60	120°
0900	1.80	120°	1.80	120°
1000	2.00	120°	2.00	120°
1100	2.20	120°	2.20	120°
1200	2.40	120°	2.40	120°
1300	2.60	120°	2.60	120°
1400	2.80	120°	2.80	120°
1500	3.00	120°	3.00	120°
1600	3.20	120°	3.20	120°
1700	3.40	120°	3.40	120°
1800	3.60	120°	3.60	120°
1900	3.80	120°	3.80	120°
2000	4.00	120°	4.00	120°
2100	4.20	120°	4.20	120°
2200	4.40	120°	4.40	120°
2300	4.60	120°	4.60	120°
2400	4.80	120°	4.80	120°

(Normal River Current Included)



WGS 84 POSITIONS can be plotted directly on this chart